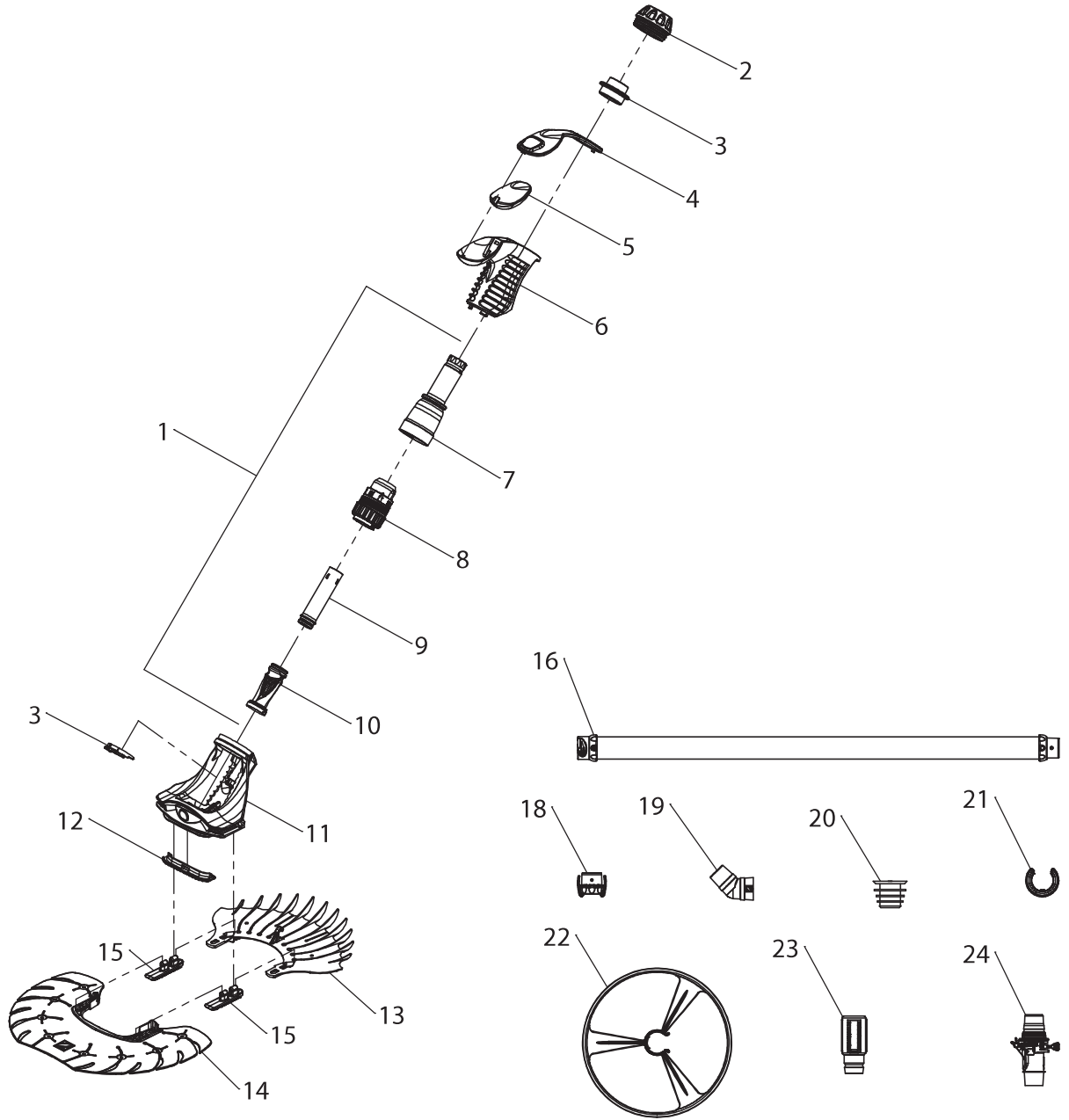




# T5<sup>®</sup> Duo



Position	Description	Reference
1	Cleaner internal assembly	W70717
2	Yellow ring	W78101
3	Holding ring	W78005
4	Float upper part, silver	W78102
5	Float	W78014
6	Float lower part, blue	W78103
7	External outlet hose	W70718
8	Cassette	W70719
9	Internal outlet hose	W70720
10	Diacyclone diaphragm	W73010P
11	Blue body/head	W78104
12	Fender, silver	W78105
13	Front disc, silver	W78106
14	Rear disc, blue	W78107
15	Disc connectors, silver	W78108
16	Set of 6 x 1 m Twist Lock hoses	W78055
18	Quick connector, blue	W79033P
19	45-degree elbow	W70244
20	Conical adaptor	W69657P
21	Hose counterweight	W83247P
22	Anti-jamming wheel, blue	W78076
23	Flow rate tester	W70335P
24	Automatic flow rate adjustment valve	W60055P
	Wintering Bag	W70151P