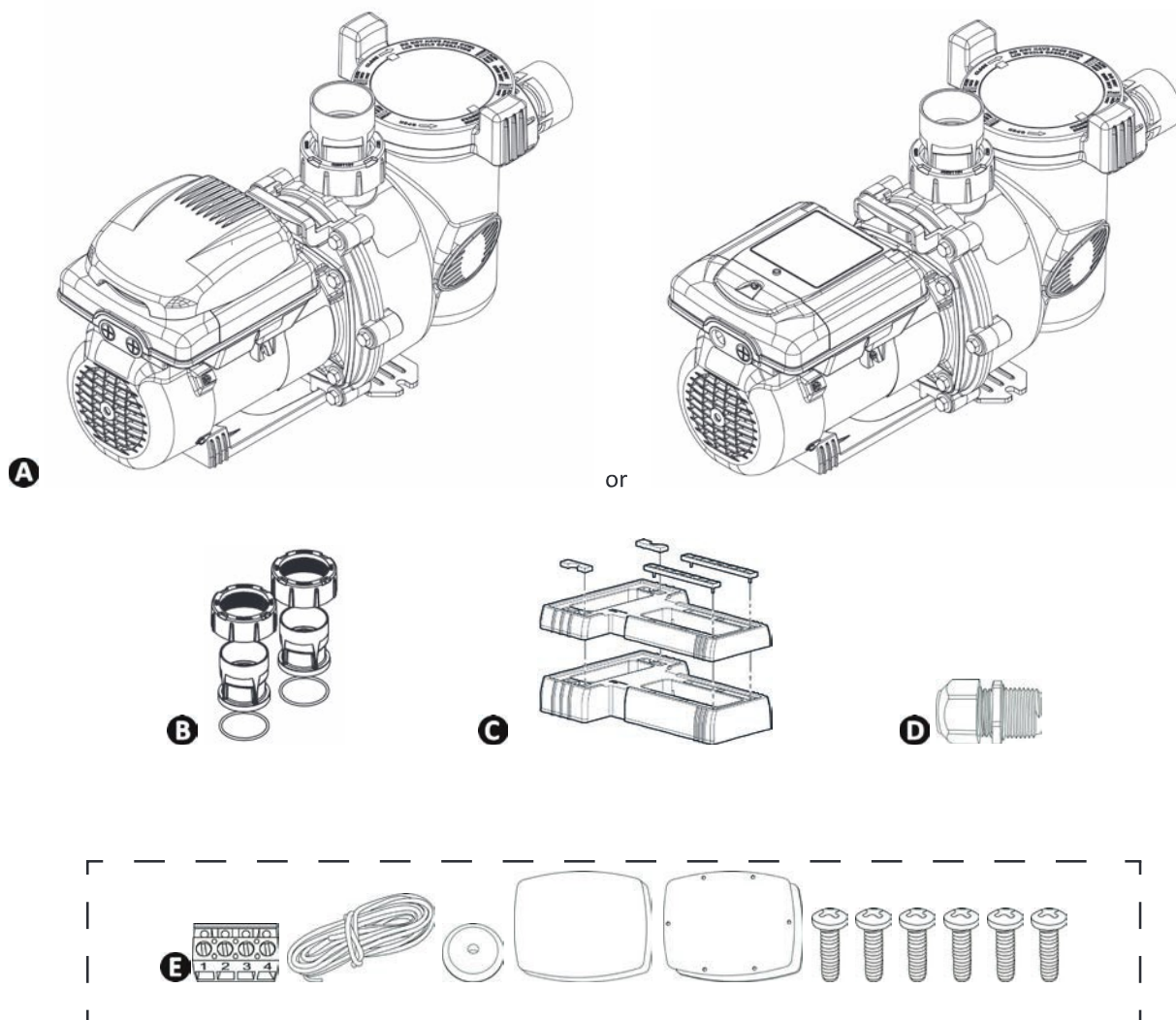




# 1 Specifications

## 1.1 | Description



EN

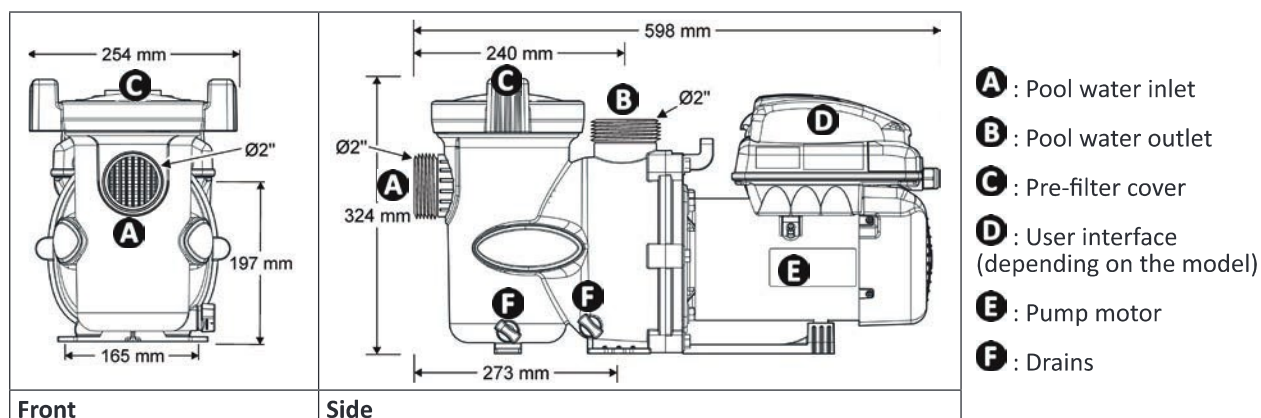
| A | FloPro™ VS                | JEP<br>(with user<br>interface) | AUT<br>(without user<br>interface) |
|---|---------------------------|---------------------------------|------------------------------------|
| B | Ø63/50 mm connectors (x2) | ✓                               | ✓                                  |
| C | Pump bases (x2)           | ✓                               | ✓                                  |
| D | Cable gland (x2)          | ✓                               | ✓                                  |
| E | Remote user interface kit | ✓                               |                                    |

## ➤ 1.2 | Technical specifications

| FloPro™ VS                            |                   | Unit |  |
|---------------------------------------|-------------------|------|--|
| Operating water temperature           |                   |      | 2 to 35°C  |
| Operating air temperature             |                   |      | 2 to 50°C  |
| Nominal voltage of motor              |                   |      | 230 Vac-50 Hz  |
| Motor power - phases                  |                   |      | 1 Ph   |
| Admissible variation in motor voltage |                   |      | ± 10% (during operation)                                   |
| Motor output power (P2)               | HP                |      | 1.65   |
|                                       | kW                |      | 1.2  |
| Maximum motor input power (P1)        | kW                |      | 1.5  |
| Maximum motor amperage                | A                 |      | 5.22   |
| Cable cross-section                   | mm <sup>2</sup>   |      | 3x1.5  |
|                                       |                   |      | 3G1.5  |
| Electrical protection                 | A                 |      | 16   |
| Motor protection rating               |                   |      | IPX4   |
| Maximum pump flow                     | m <sup>3</sup> /h |      | 30.7   |
| Pump flow rate at 8 metres of head    | m <sup>3</sup> /h |      | 26.0   |
| Maximum pump head                     | mH <sub>2</sub> O |      | 21.5   |
|                                       | bar               |      | 2.1  |
| Pump operation                        |                   |      | from 600 to 3,450 rpm                                      |
| Settings                              |                   |      | in intervals of 10 rpm                                     |
| Number of programmable speeds         |                   |      | 8  |
| Pump pipe connection                  |                   |      | 2" threaded suction/discharge<br>Ø63/50 mm union couplings |
| Maximum pump salinity                 |                   |      | 6g/L (6000 ppm)  |

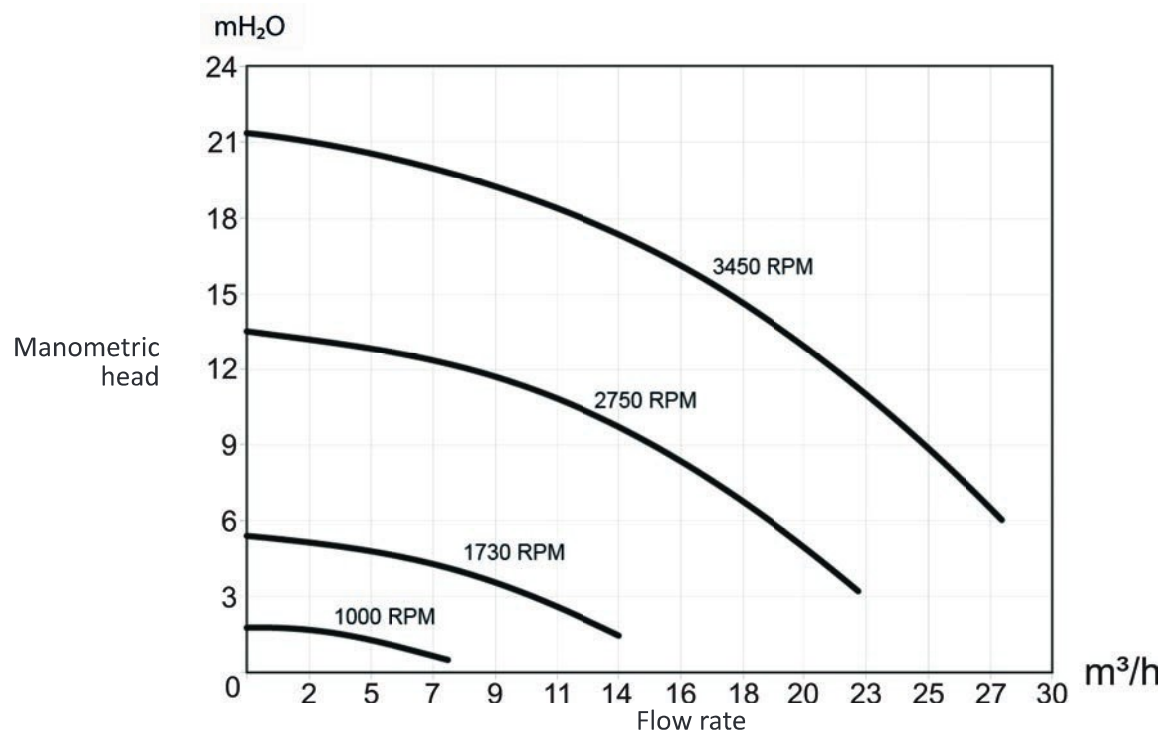
| Pipes   | Maximum suction rate at<br>1.8 metres/second | Maximum discharge rate at<br>2.4 metres/second |
|---------|--|--|
| Ø 50 mm | 14 m <sup>3</sup> /h                         | 19 m <sup>3</sup> /h                           |
| Ø 63 mm | 20 m <sup>3</sup> /h                         | 27 m <sup>3</sup> /h                           |

## ➤ 1.3 | Dimensions and marking



|        |   |
|--------|---|
| Weight | 17 Kg (± 0.5 Kg depending on the model) |
|--------|---|

## 1.4 I Performance curves



EN